

RMH

When Innovation & Nature Combine



VS 18,20,22



VS 18,20,22 BENEFITS

Self propelled, self loading mixer

THE FASTEST CHOPPER IN THE WORLD

that boasts the advantage of maintaining fibre structure for all your roughage



UNIFORMITY

The mix is homogenous and consistent every time



CLAMP FACE MANAGEMENT

One step operation, reduces dry matter losses of forages & uniform loading.



LOADING ALL FEED TYPES WITH HIGH ACCURACY



EASY ACCESS TO ENGINE FOR SERVICING

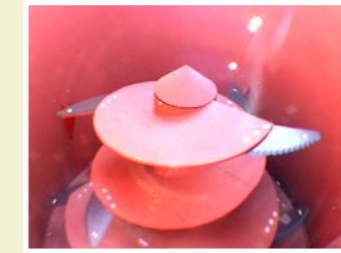


SAVE COST AND TIME

Loading, mixing, transporting and discharge all with one machine



FEATURES



The VS18, VS20 and VS22 offer large capacity using a single auger tub. Strength and durability of build offer farmers a superb all-in-one mixer. With no need for loader, tractor and trailed mixer, the self-propelled, self-loading VS range gives large savings in time, labour and fuel costs, as well as eliminating wastage during loading. The unique designed cutting head speeds down through the silage clamp leaving the face tidy and clean and also has the ability to load bales and straights. There are choices in unloading, including door positions and conveyor systems. Tried and tested over many years, this range is successfully feeding cows throughout the world.

STANDARD SPECIFICATION

Trailer Model	Volume M ³	Dimensions (M)			HP
		Height	Length	Width	
VS 18	18	3.02	7.83	2.95	208
VS 20	20	3.20	7.83	2.95	208
VS 22	22	3.55	8.22	2.95	208



The company reserves the right to make alterations which may affect the above specifications

RMH

When Innovation & Nature Combine



RMH - TMR

RMH

www.rmhmixer.com

Industrial Zone Sderot
P.O.B 105, 80100, Israel
Tel : 972-8-6891121
Fax : 972-8-6899147
Email : sales@lachish.com